

## Full Paper Template for CECAR 9 (Title)

Sanjeev SURI<sup>1\*</sup>, Ajay GOYAL<sup>2</sup>, and Rajinder GHAI<sup>3</sup>

<sup>1</sup> Chief Engineer, Bhakra Beas Management Board, Talwara Township, Punjab, India

<sup>2</sup> Professor, Deptt. of Civil Engineering, Chitkara University, Himachal Pradesh, India

<sup>3</sup> Executive Engineer, Deptt. of Water Resources, Govt. of Punjab, Chandigarh, India

\* Corresponding author; e-mail: abc123@xyzmail.com

**ABSTRACT:** An extended abstract or a full paper should be prepared in the same format as follows: (1) Limits on the length of a full paper is up to 15 pages, (2) Use A4-size sheets, (3) Use 14-point Calibri bold for title, (4) Use 12-point Times New Roman for author's names and affiliations, (5) Title, author's names, and affiliations should be centered, (6) Insert one blank line between the affiliations and the main text, (7) The Abstract should be 300 to 500 words long, and (8) Use 11-point Times New Roman for the Abstract and the main text.

### 1. HEADINGS (INDENT LIKE THIS SAMPLE IF IT IS LONG)

#### (1) Main heading

Capital letters in 12pt bold face fonts should be used for main headings (chapter titles) that follow the chapter numbers as is shown in this example.

#### (2) Sub-headings for sections

The sub-headings for sections, in 11pt bold face fonts, with their initial letters capitalized, are preceded by parenthesized section number like (2).

#### a) Sub-headings for sub-sections

They are written just as the sub-headings for sections are done, but follow alphabets with right parentheses. No spacing of lines is left before and after every sub-heading.

### 2. MATHEMATICS

Use special high quality fonts for all mathematical equations in the text. Some equations may be placed off the text as:

$$G = \sum_{n=0}^{\infty} b_n(t) \quad (1a)$$

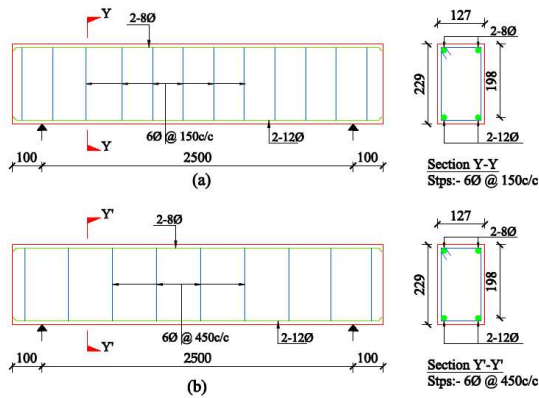
$$F = \int_{\Gamma} \sin z dz \quad (1b)$$

and some appear in the text as  $C_D$ ,  $\alpha(z)$ . Numbered equations ((1a) and (1b) for example) should be center-aligned. The equation numbers in parentheses should be placed flush right.

### 3. FIGURES AND TABLES

#### (1) Location of figures and tables

Figures, tables and photographs should be inserted at the upper or lower part of the page where reference is first made to them. Do not place them altogether at the end of the manuscript. Do not place any text besides figures or tables. Insert about one to two lines spacing above the main text.



**Table 1** Properties of reinforcement steel bars

Diameter (mm)	Yield Stress (MPa)	Ultimate Stress (MPa)	Elongation (%)
12	556.5	710.0	22.0
8	548.5	679.5	18.4
6	465.0	491.5	5.0



**Fig. 1** Beam section and reinforcement details

#### (2) Fonts and captions

Do not use too small characters in figures and tables. At least, the letters should be larger than those in the

captions (9 pt). Captions should be centered like an example of **Fig. 1** and **Table 1**. The heading of captions is 11pt bold face.

#### 4. CITATION AND REFERENCE LIST

All the references must be parentheses and used at the text (*Ghai et al., 2016*) where it is referred like this (*Cuenca, 2014*). The reference list must be summarized at the end of the main text and sort alphabetically.

#### 5. CONCLUSIONS

**ACKNOWLEDGMENT:** Acknowledgment should follow Conclusions.

#### REFERENCES

- Aggarwal, L. K., Thapliyal, P. C. and Karade, S. R., (2007), "Properties of Polymer-Modified Mortars using Epoxy and Acrylic Emulsions", *Construction and Building Materials*, vol. 21, pp. 379-383.
- Anonymous: IS 10262, (2009), "Concrete Mix Proportioning - Guidelines", *Bureau of Indian Standards*, New Delhi, India.
- Bansal, P., Kumar, M. and Dar, M. A., (2016), "Retrofitting of Exterior RC Beam-Column Joints using Ferrocement Jackets", *Earthquakes and Structures*, vol. 10 (2), pp. 313-328, DOI: <http://dx.doi.org/10.12989/eas.2016.10.2.313>
- Cuenca, E., (2014), "On Shear Behavior of Structural Elements Made of Steel Fiber Reinforced Concrete", *PhD thesis submitted to Universitat Politècnica de València*, Spain, Springer, Berlin, Germany.
- Ghai, R., Bansal, P. P. and Kumar, M., (2018), "Strengthening of RCC Beams in Shear by using SBR Polymer-Modified Ferrocement Jacketing Technique" *Advances in Civil Engineering, Hindawi*, vol. 2018, Article ID 4028186, 16 pages, <https://doi.org/10.1155/2018/4028186>.
- Pattanaik, S. C., (2009), "Structural Strengthening of Damaged RCC Structures with Polymer Modified Concrete", *Proceedings of Workshop on Rehabilitation and Retrofitting of Structures*, held at Indian Institute of Technology, Mumbai, 28-30 August, 2009.